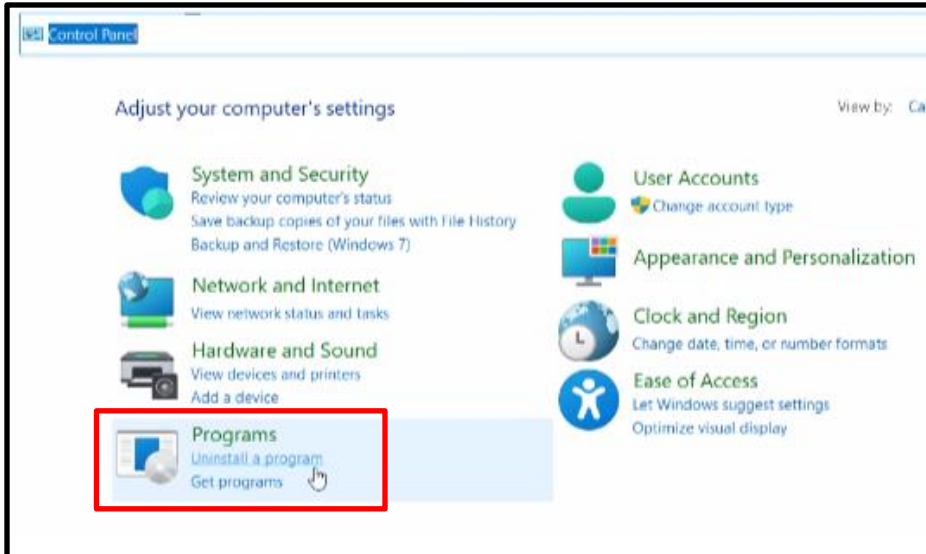


IMPORTANT: Confirm user has administrative rights to download programs to the PC or has someone onsite who does.

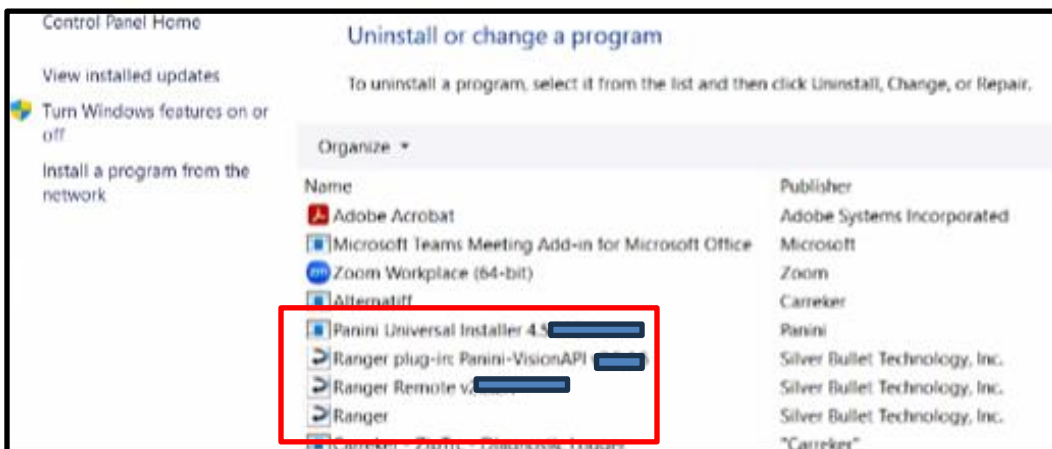
Remove Previous Scanner Drivers

1. Go to Control Panel > Programs > Uninstall a program

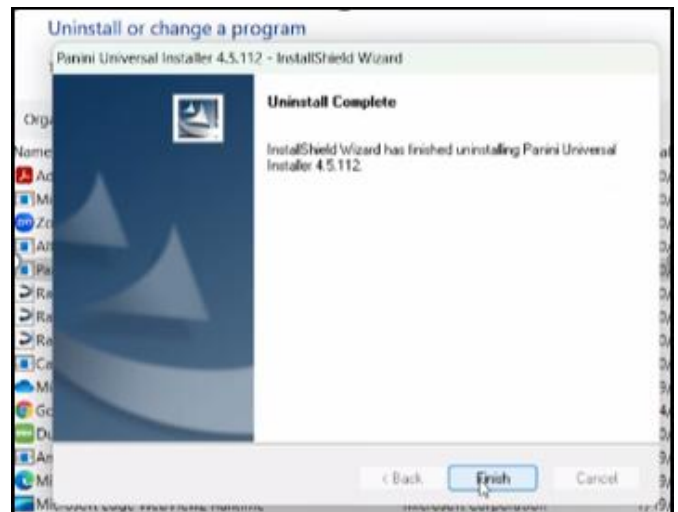
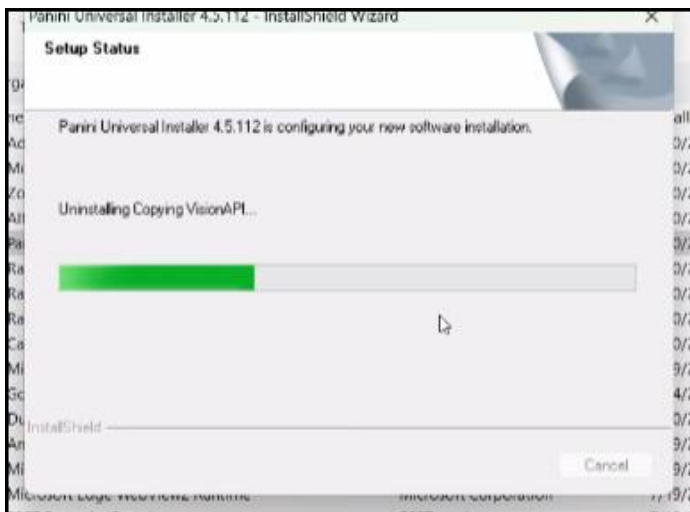
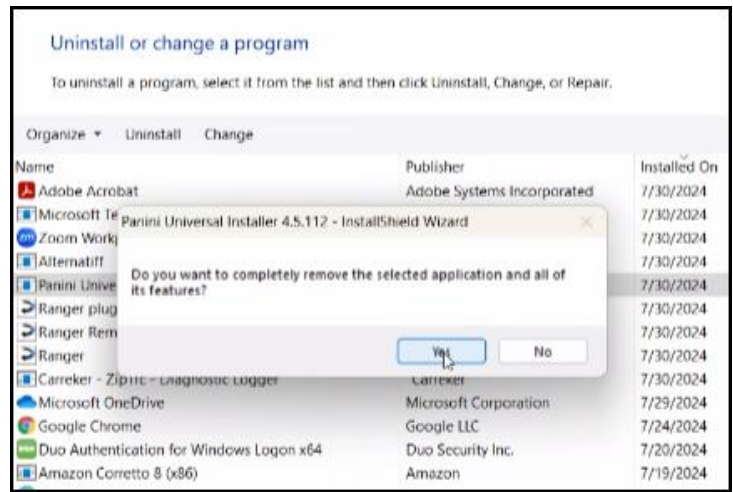
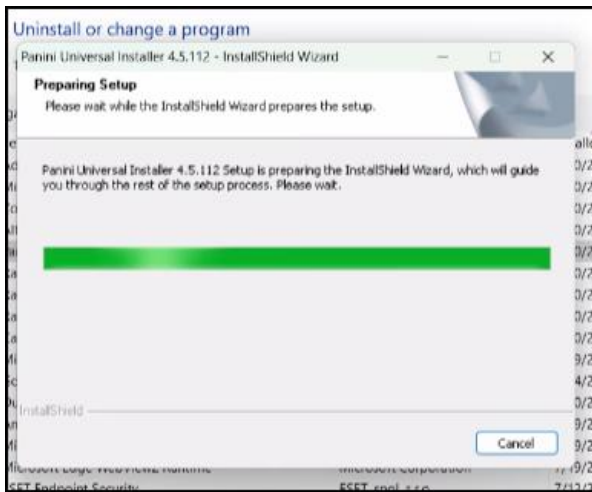
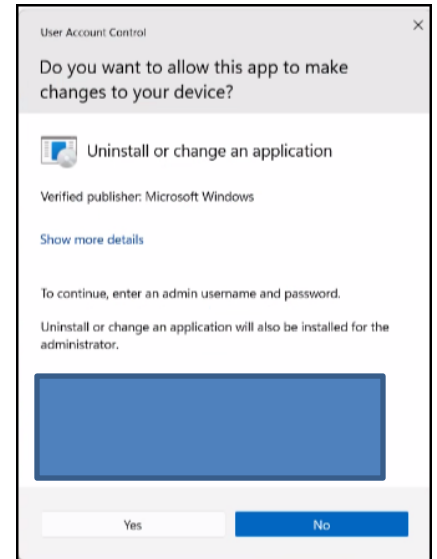
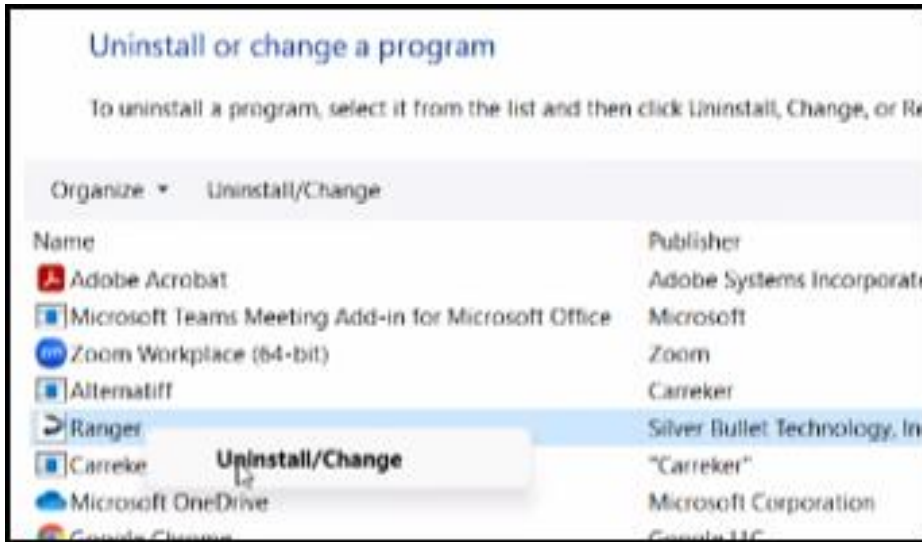


2. Locate the following > right-click to uninstall each:

- Panini Universal Installer
- Ranger plug-in Panini-VisionAPI
- Ranger Remote
- Ranger



Sample Uninstall Screens:

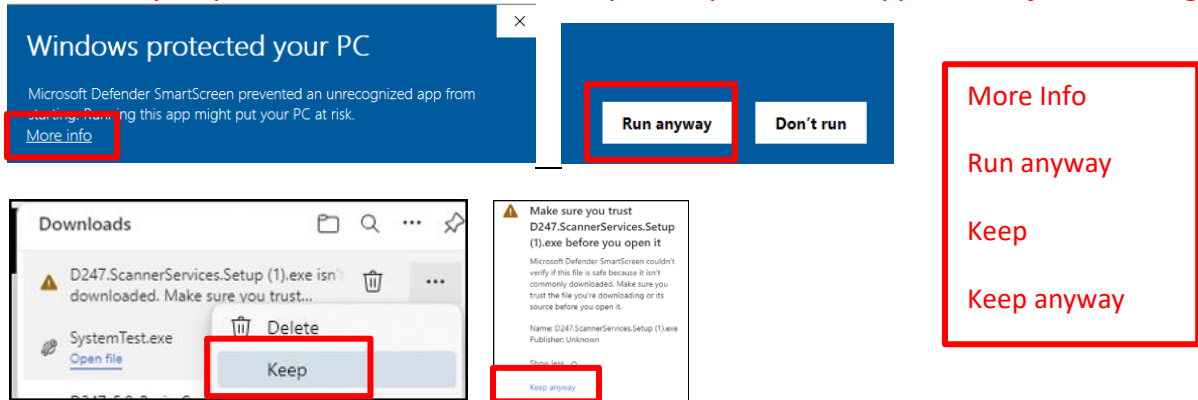


Install New Remote Deposit Services and Scanner Drivers

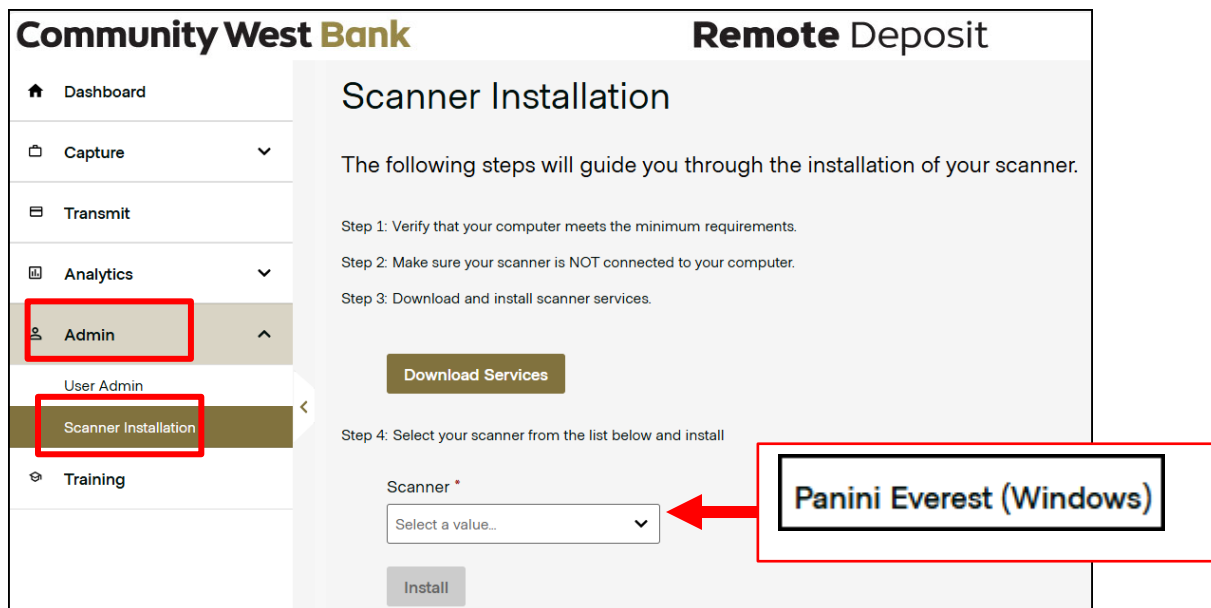
1. Unplug scanner from computer.
2. Log in to **Business Online Banking** using **Google Chrome** as the preferred web browser.
3. Click on the **Cash Management** menu and then **Remote Deposit**.
4. The Remote Deposit window will open in a new tab.

Notes: -Enable pop-ups

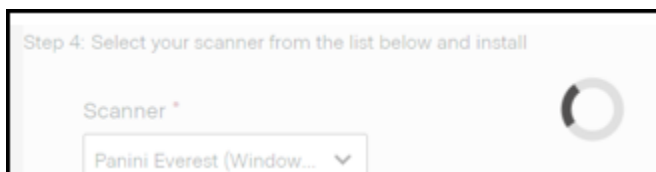
-Cautions may be presented and need to be accepted to prevent the applications from running.



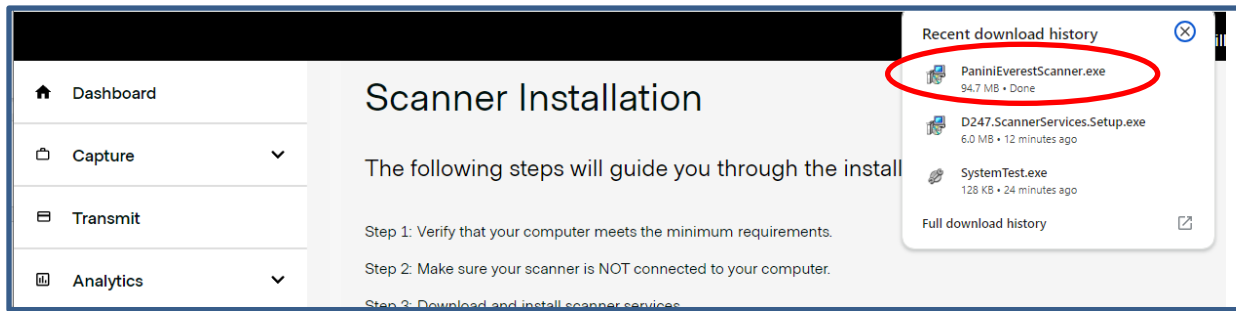
5. From the **Admin** menu on the left, select **Scanner Installation**.
6. Skip Step 3 (do not need to download services as this is included in Step 4).
7. In Step 4, select the applicable scanner, typically "Panini Everest (Windows)" and click **Install**.



Note: The driver bundle download may take several minutes to load before you are able to install. While downloading you may see the circle spinning for a while.

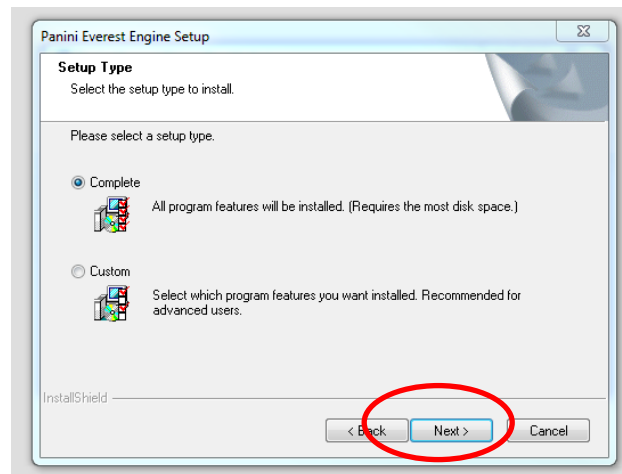
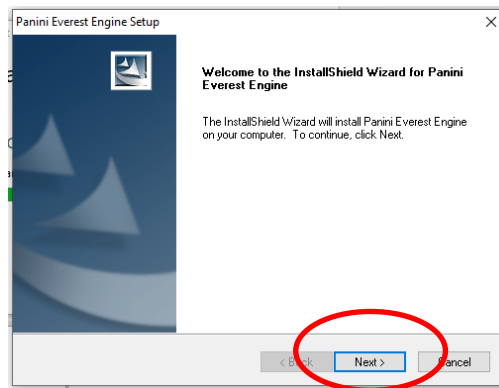
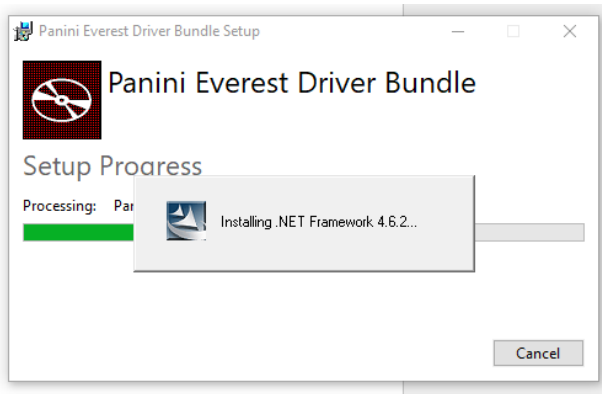
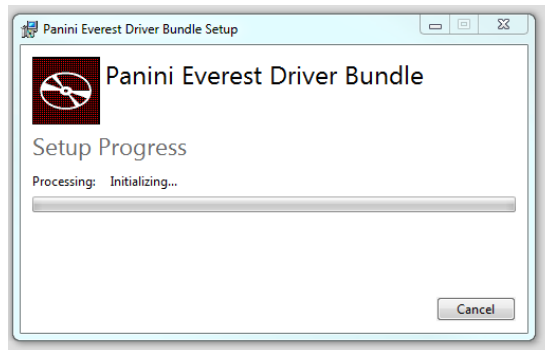
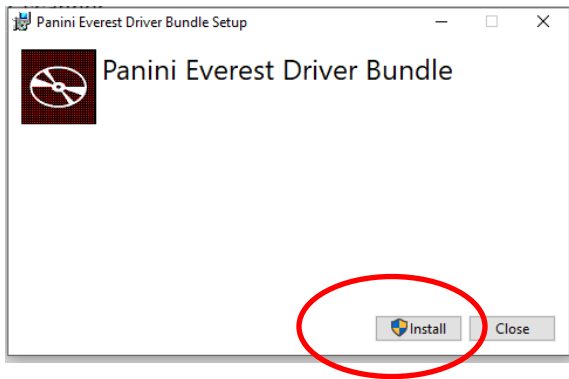


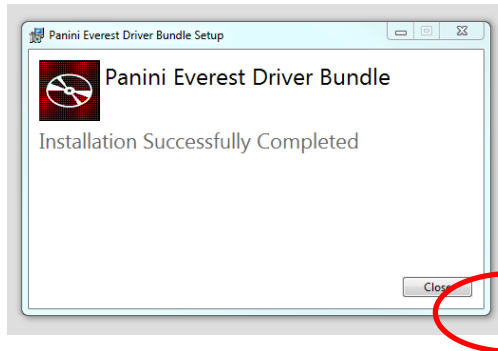
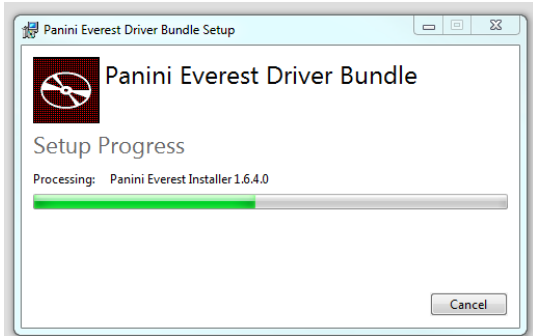
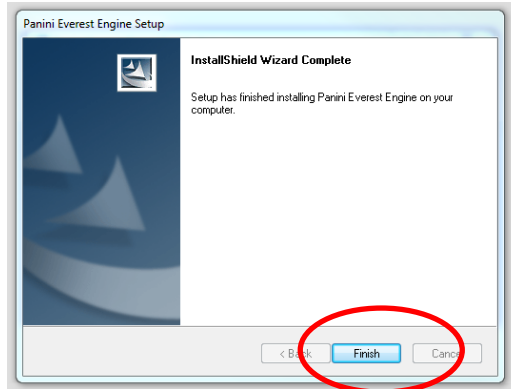
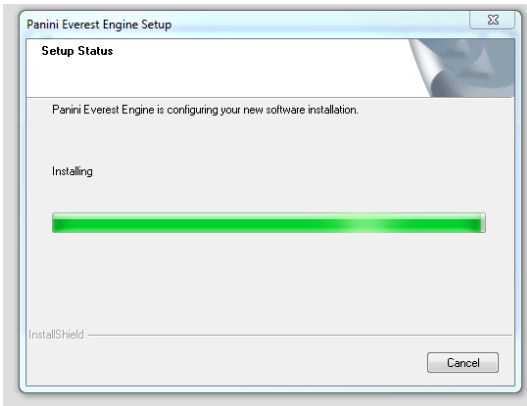
8. Once downloaded, continue the installation.



9. Continue the prompts for the install wizard, keeping all defaults. (Screenshot examples are for Panini scanners.)

10. When the second set of installation is complete, click **Close**.

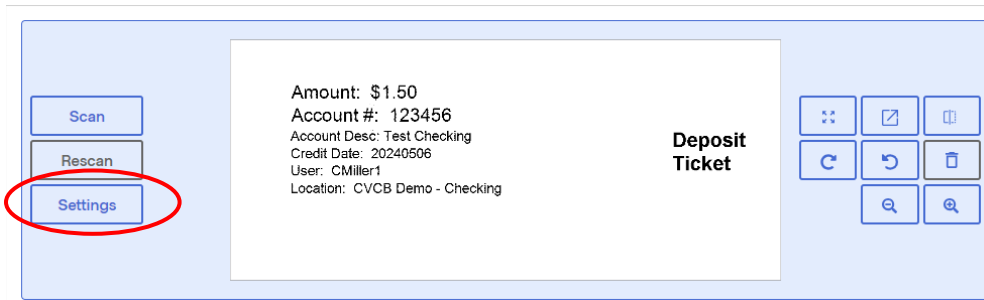




11. Connect the scanner.
12. When ready to make your first deposit on the new system, log back in to Remote Deposit and proceed with creating the initial deposit, **taking special note to complete the important scanner settings as outlined below.**
(Note: See the **Remote Deposit User Guide** for instructions for creating a remote deposit.)

IMPORTANT: Before creating the first deposit after the scanner installation, please confirm the following additional scanner settings to reduce errors.

- a. Click the scanner **Settings** button to the left of the Deposit Ticket.



- b. Select **Panini Everest (Windows)** in the **Scanner Type** drop-down menu.
- c. In the **Capture Options** section, turn all to "OFF".
- d. Select **Save**.

